



FOR NEW EQUIPMENT SALES, CALL
866.966.2969
TO SPEAK WITH AN ALTEC REPRESENTATIVE
or visit us online at altec.com

 **Altec**
TELESCOPIC CRANE

STANDARD FEATURES

- Altec LMAP (Load Moment & Area Protection) System
 - » Rated Capacity Limiter
 - » Displays: Boom Length, Boom Angle, Load on Hook, Percent of Rated Capacity
 - » Operator Defined Audible Alarm Set-Points for Boom Angle, Length and Rotational Position
- Curbside and Streetside Walk-Through Control Stations
- Outrigger Boom Interlock System
- Outrigger Motion Alarm
- Winch Drum Rotation Indicator
- Anti-Two Block Device
- Rotation Resistant Wire Rope
- Winch Control at Load Hook Stow Point
- Hydraulic Oil Cooling System

OPTIONS

- 2-Piece Jib: 24 ft (7.3 m) Retracted, 40 ft (12.1 m) Extended
- Load Block
- Load Block and Ball Storage on Deck of Crane
- ASME B30.23 Personnel Lifting Package
 - » 2-Man, Steel Platform
 - Fixed, 600 lb (272.1 kg) Capacity, or
 - Rotating, 1,200 lb (544.3 kg) Capacity
 - » Radio Remote Controls
 - » Fall Protection
- ASME B30.23 Compliant Test Weight Package
- Hydraulic Tool Circuit at Tail Shelf

Recommended equipment, available through Altec Supply, include wheel chocks and outrigger pads.

CRANE SPECIFICATIONS

Maximum Lift Capacity	36,000 lb (16.3 metric ton)
Boom Length (3-Section)	70 ft (21.3 m)
Powered Sheave Height	80 ft (24.4 m)
Maximum Sheave Height with 2-Stage Jib	120 ft (36.6 m)
Stowed Travel Height	12.8 ft (3.9 m)
Vehicle Travel Length	38 ft (11.6 m)
Outriggers	Primary - Pivoting Beam; Auxiliary - Modified A-Frame
Two Speed Winch Capacity	Two Speed, 12,000 lb (5,443 kg)
Control System	Pilot-Operated, Hydraulic
ASME B30.5 Compliant	

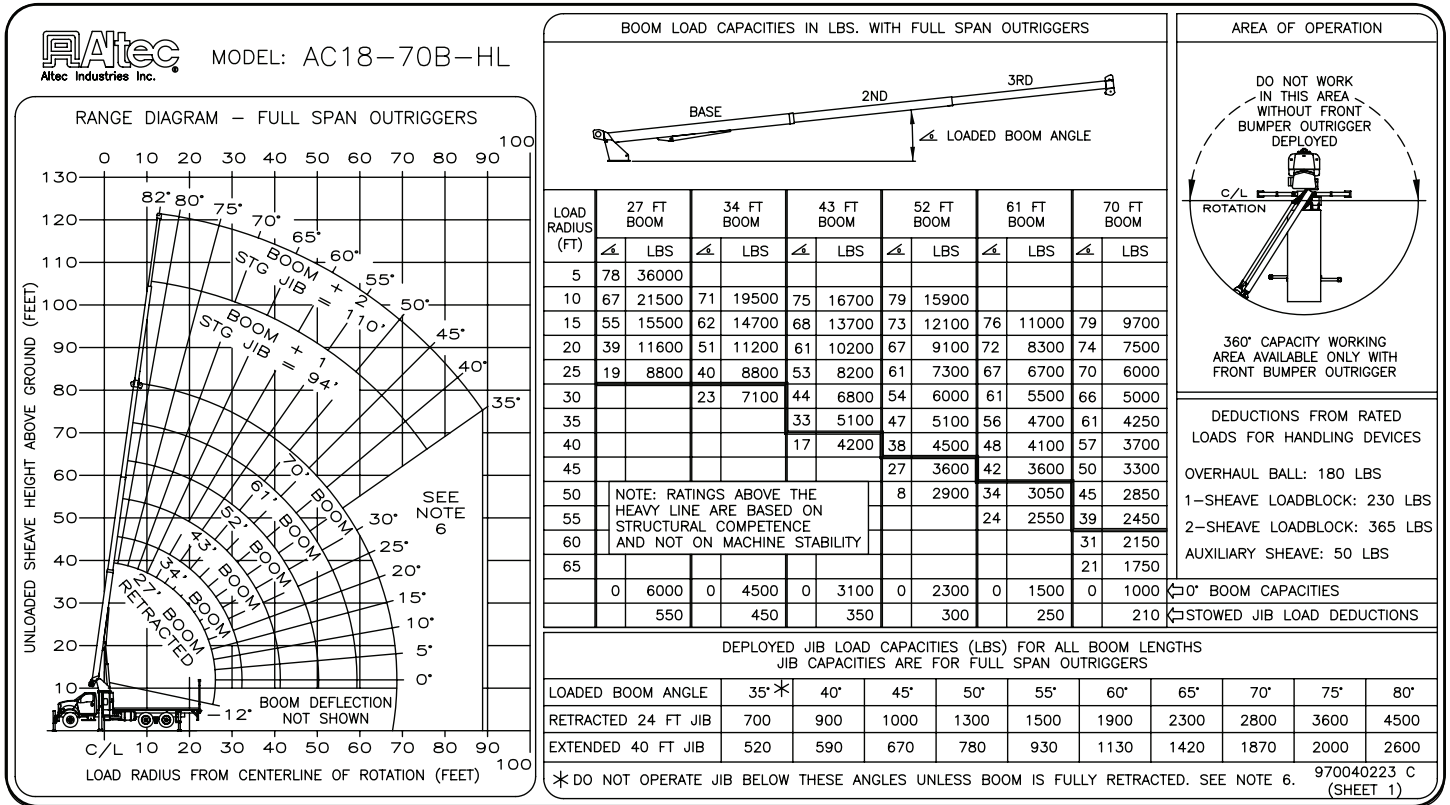
LOAD MOMENT AND AREA PROTECTION



The convenient LMAP menu navigation with an intuitive user interface displays load on hook, rated capacity percentage, boom length and angle, load radius, and operator-defined protection with audible alarms. While the intuitive display and user interface are unique to Altec, the system's hardware consists of common "off-the-shelf" components that were critically selected for their performance and serviceability.

UNIT		RECOMMENDED CHASSIS DIM				MINIMUM RECOMMENDED CHASSIS SPECIFICATIONS				
Model	Rear Axle	CT (in)	WB (in)	AF (in)	Rear Axle Spread (in)	Front Axle Rating (lb)	Rear Axle Rating (lb)	GVWR (lb) W	Frame Sec Modulus (in ³)	Frame RBM (in-lb)
AC18-70B	Single	188	256	110		13,000	20,000	33,000	consult factory	
AC18-70B-HL	Tandem	171	238	125	54	14,000	34,000	48,000	consult factory	
AC18-70R-HL	Tandem	179	246	125	54	14,000	34,000	48,000	consult factory	

LOAD CHART (AC18-70) - FULL SPAN OUTRIGGERS



Note 1: When jib is erected, boom must be fully retracted before lowering below minimum boom with jib angles. Retracted boom with jib has no lifting capacity below a 50° angle with full span outriggers and below a 65° angle not shown on jib load rating chart.

Charts published herein are intended to be a guide only and should not be construed to warrant application for lifting purposes. Consult supplied operation manual for further details.

DUAL STAND-UP WALK THROUGH CONTROL STATIONS

Dual walk-through controls for the AC18-70B and AC18-70R models allow the operator the ability to work from either side of the bed for best visibility depending on application providing an unobstructed view of the bed and work area.



OUTRIGGER CONTROLS AT TAILSHELF

Outrigger controls at the tailshelf allow the operator to access the controls from either side of the bed for best visibility of the contact surface which reduces the chance of a crushing hazard while deploying and retracting outriggers.



LOWER WINCH CONTROL

The lower winch control helps prevent boom damage by reducing the flow pressure to the winch during stowage. The operator can control the load block or ball while winching up or down during set up and stowage without the need to access the upper control station, reducing slip/trip/fall hazard exposure.



866-966-2969
sales@altec.com

AIOSAC1870-217-v1

33 Inverness Center Parkway
Birmingham, AL 35242
Fax 205.449.4774
www.altec.com

For more complete information on Altec products and services, visit us on the web at www.altec.com.

© 2017 Altec Inc
All Rights Reserved

Material and specifications are subject to change without notice. Featured units in photos may include optional features. Please contact an Altec representative for all available options. Charts published herein are intended to be a guide only and should not be construed to warrant application for lifting purposes. Consult supplied operation manual for further details.

Altec® and the Altec logo are registered trademarks of Altec Inc in the United States and various other countries and may not be used without permission.

