

# SELF-PROPELLED TELESCOPIC BOOMS | ENGINE-POWERED

## OUTSTANDING HORIZONTAL OUTREACH

Telescopic booms offer greater horizontal outreach than any other type of aerial platform — perfect for areas with limited access in construction and industrial applications. Genie® telescopic S™-booms are also designed for productivity with the traction and drive speed you need to get around the job site and to the work area. These models reach out horizontally between 31 ft 8 in (9.65 m) and 77 ft 5 in (23.60 m), with working heights of 46 ft (14.20 m) to 91 ft (27.90 m).

### GREAT FOR TIGHT SPACES

The 360° continuous rotation turntable rotates full circle for quick and flexible positioning. Minimal tailswing allows you to maneuver in tight work spaces.

### DUAL-FUEL ENGINE OPTIONS

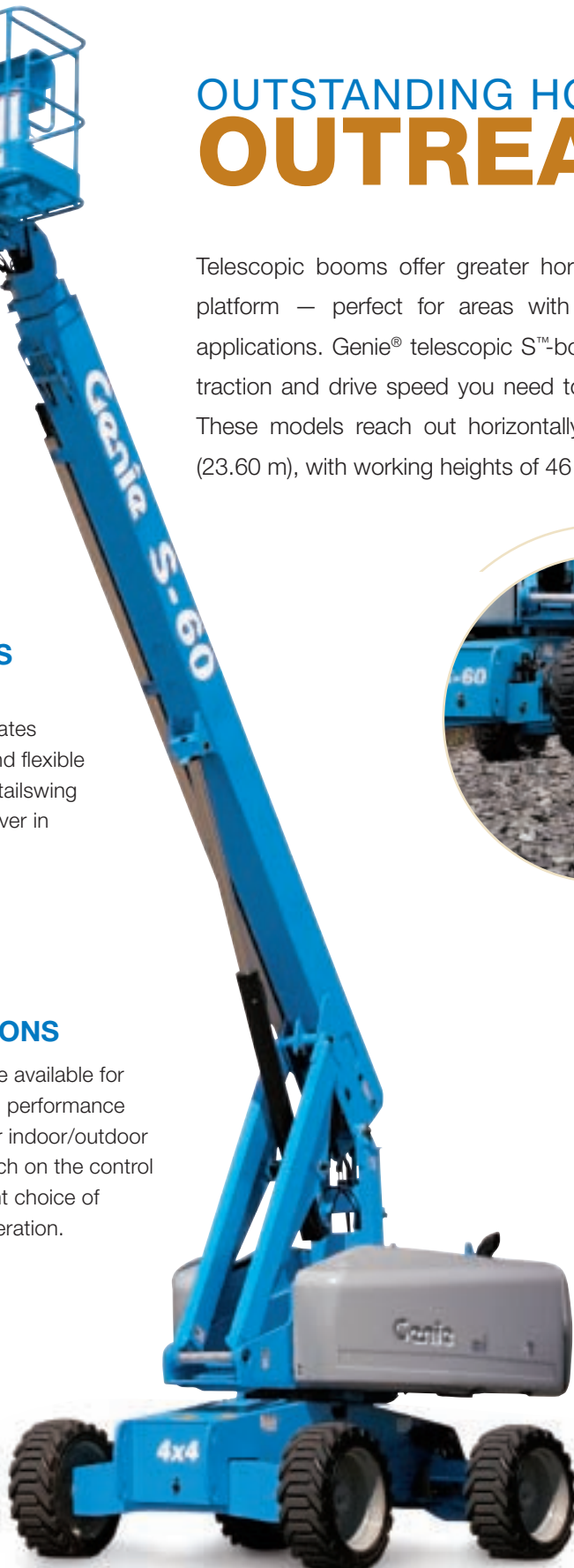
Dual-fuel options are available for reliable, on-demand performance with the flexibility for indoor/outdoor applications. A switch on the control panels allows instant choice of gasoline or LPG operation.



### OUTSTANDING TERRAINABILITY

A revolutionary patented system automatically senses the terrain and adjusts the axle position based on ground conditions. Positive traction drive maintains equal power to all drive wheels, even if one wheel loses traction in mud, snow or sand. And two- or four-wheel drive options make it easy to drive up loading ramps for transport.

**Genie's revolutionary patented active oscillation system automatically senses the terrain and adjusts the axle position based on ground conditions.**





### SUPERIOR REACH AND POSITIONING

Exceptional horizontal outreach and a rotating, self-leveling platform allow precise positioning exactly where you need to work. For added flexibility, the articulating jib boom option gives you an extra 5 ft (1.52 m) of horizontal or vertical reach and 135° of working range.

### INDUSTRY-LEADING CAPACITY

Increase productivity with the high-capacity S™-60 HC. Its three-person capacity platform holds 750 lbs (340 kg) at the maximum horizontal outreach of 50 ft 10 in (15.48 m) or 1,250 lbs (567 kg) up to 40 ft 8 in (12.39 m). Built-in platform load and position sensing provides automatic active envelope control and peace of mind. The Genie S™-60 and S™-80 models also offer an optional 750 lb (340 kg) capacity configuration with unrestricted outreach of 50 ft 10 in (15.48 m) on the S™-60 and 72 ft 5 in (22.07 m) on the S™-80.



### MAXIMIZE PRODUCTIVITY YEAR-ROUND

Featuring a fixed, four-point track system, the S™-60 Trax and S™-65 Trax models allow operators to maneuver in a diverse range conditions. The rubber tracks provide increased flotation and traction for traveling in mud, sand, snow, gravel, in wet or rough terrain environments, and even on sensitive outdoor surfaces. Because the new Trax models are fixed with four independent tracks, they steer like a wheeled machine to allow maneuvering close to walls and foundations. Plus, each track flexes 23° up and down for a smooth ride during operation and travel. Thanks to a machine width of 8 ft 6 in, Trax models can be transported without over-width permits.

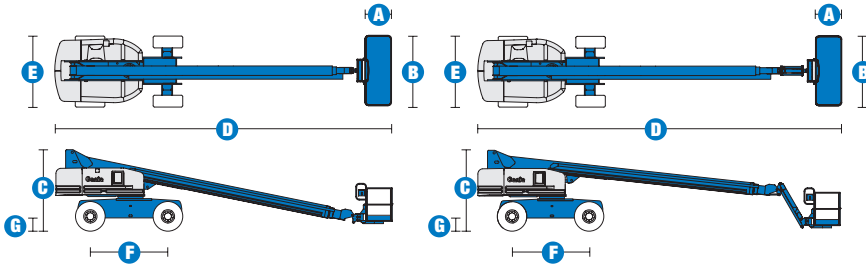
### ENGINE-POWERED MODELS AVAILABLE

- S™-40
- S™-45
- S™-60
- S™-60 TRAX
- S™-60 HC
- S™-65
- S™-65 TRAX
- S™-80
- S™-85

# SELF-PROPELLED TELESCOPIC BOOMS

## S™-80 & S™-85

### Specifications



MODELS	S™-80		S™-85	
MEASUREMENTS	Metric	US	Metric	US
Working height max*	26.40 m	86 ft	27.90 m	91 ft
Platform height max	24.40 m	80 ft	25.90 m	85 ft
Horizontal reach max	22.07 m	72 ft 5 in	23.60 m	77 ft 5 in
Below ground reach	3.05 m	10 ft	4.19 m	13 ft 9 in
A Platform length - 6 ft model	76 cm	2 ft 6 in	76 cm	2 ft 6 in
Platform length - 8 ft model	91 cm	3 ft	91 cm	3 ft
B Platform width - 6 ft model	1.83 m	6 ft	1.83 m	6 ft
Platform width - 8 ft model	2.44 m	8 ft	2.44 m	8 ft
C Height - stowed	2.80 m	9 ft 2 in	2.80 m	9 ft 2 in
D Length - stowed	11.35 m	37 ft 3 in	12.37 m	40 ft 7 in
Length - transport (jib tucked under)			10.67 m	35 ft
E Width - axles retracted	2.44 m	8 ft	2.44 m	8 ft
Width - axles extended	3.07 m	10 ft 1 in	3.07 m	10 ft 1 in
F Wheelbase	2.74 m	9 ft	2.74 m	9 ft
G Ground clearance - centre	43 cm	1 ft 5 in	43 cm	1 ft 5 in

### PRODUCTIVITY

Lift capacity - 6 ft platform	272 kg	600 lbs	227 kg	500 lbs
Lift capacity - 8 ft platform	227 kg	500 lbs	227 kg	500 lbs
Platform rotation	160°	160°	160°	160°
Turntable rotation	360° continuous	360° continuous	360° continuous	360° continuous
Turntable tailswing - axle retracted	1.42 m	4 ft 8 in	1.42 m	4 ft 8 in
Turntable tailswing - axle extended	1.12 m	3 ft 8 in	1.12 m	3 ft 8 in
Drive speed - stowed	5.6 km/h	3.5 mph	5.6 km/h	3.5 mph
Drive speed - raised/extended	1.1 km/h	0.68 mph	1.1 km/h	0.68 mph
Gradeability** - stowed 2WD	30%	30%	30%	30%
Gradeability** - stowed 4WD	45%	45%	45%	45%
Turning radius - axle extended: inside	3.25 m	10 ft 8 in	3.25 m	10 ft 8 in
outside	7.01 m	23 ft	7.01 m	23 ft
Controls	12 V DC proportional		12 V DC proportional	
Tyres - RT lug	385/65 D22.5		385/65 D22.5	

### POWER

Power source	Deutz BF4L 2011 4 cylinder diesel 78 hp (58.1 kW) Perkins 804C-33 4 cylinder diesel 63 hp (50 kW)			
Auxiliary power unit	12 V DC	12 V DC	12 V DC	12 V DC
Hydraulic tank capacity	170 L	45 gal	170 L	45 gal
Fuel tank capacity	125 L	33 gal	125 L	33 gal

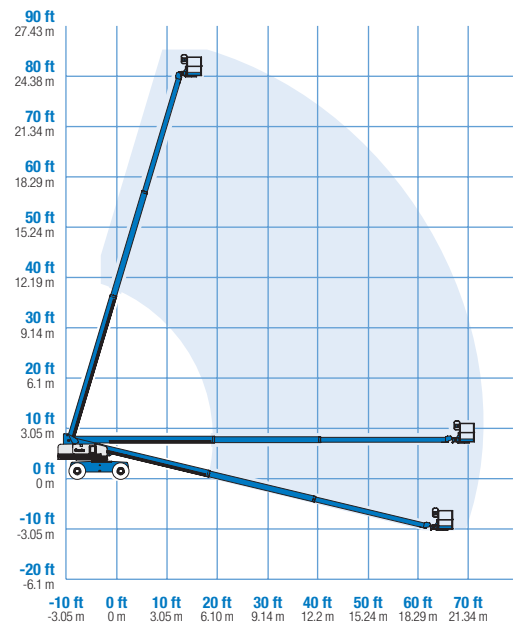
### WEIGHT\*\*\*

2WD	15,073 kg	33,230 lbs	16,198 kg	35,710 lbs
4WD	15,141 kg	33,380 lbs	16,266 kg	35,860 lbs

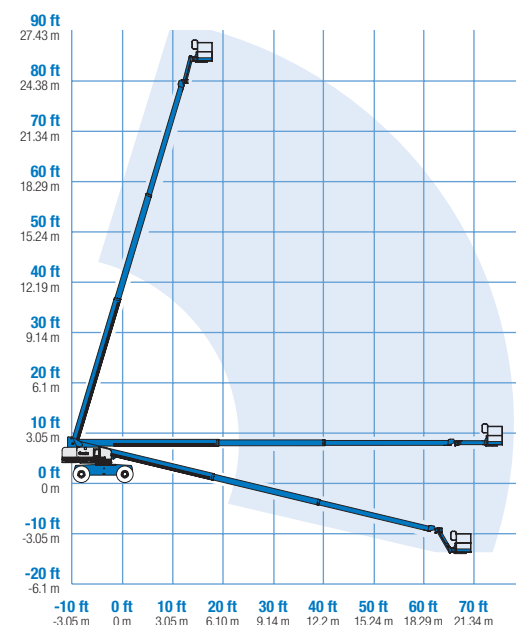
### STANDARDS COMPLIANCE

CE EN280, PB-10-611-03

### RANGE OF MOTION S™-80



### RANGE OF MOTION S™-85



\* The metric equivalent of working height adds 2 m to platform height. U.S. adds 6 ft to platform height.

\*\* Gradeability applies to driving on slopes. See operator's manual for details regarding slope ratings.

\*\*\* Weight will vary depending on options and/or country standards.

# Features

## EASILY CONFIGURED TO MEET YOUR NEEDS

### PLATFORM OPTIONS

- Steel 8 ft (2.44 m)
- Steel 6 ft (1.83 m)
- Steel 6\*\* or 8 ft (1.83 or 2.44 m) tri-entry
- Steel 4 ft (1.22 m)\*\*
- Steel 5 ft (1.52 m)\*\*

### JIB OPTIONS

- Non-jib
- 5 ft (1.52 m) jib boom

### POWER OPTIONS

- Deutz turbocharged diesel 74 hp (55 kW)
- Perkins diesel 63 hp (47 kW)
- Continental Gas/LPG 74 hp (55 kW)

### DRIVE OPTIONS

- 2WD
- 4WD

### AXLE

- Active oscillation

### TIRE OPTIONS

- Rough terrain foam-filled (standard)
- Rough terrain non-marking foam-filled
- High floatation air-filled (Increases width by 4 in)

## STANDARD FEATURES

### MEASUREMENTS

#### S™-80

- 86 ft (26.38 m) working height
- 71 ft 6 in (21.8 m) horizontal reach
- 500 lbs (227 kg) lift capacity

#### S™-85

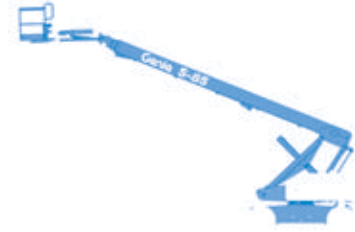
- 91 ft (27.90 m) working height
- 76 ft 6 in (23.3 m) horizontal reach
- 500 lb (227 kg) lift capacity

### PRODUCTIVITY

- Self-leveling platform
- Hydraulic platform rotation
- Fully proportional Hall effect joystick controls
- Drive enable
- AC power cord to platform
- Horn
- Hour meter
- Tilt alarm
- Descent alarm
- 360° continuous turntable rotation
- Locking low profile turntable covers
- Positive traction drive
- Two speed wheel motors

### POWER

- All engines are emissions compliant
- 12V DC auxiliary power
- Anti-restart engine protection
- Auto engine fault shutdown
- Catalytic converter muffler (Continental engine only)
- Engine block heater (Continental engine only)



## OPTIONS & ACCESSORIES

### PRODUCTIVITY

- 750 lb capacity, S-80 only\*\*\*
- Platform swing gate
- Half mesh platform inserts with swing gate
- Platform top auxiliary rail
- Arc Pro 275™ Heavy-Duty Welder package
- Welder Ready package
- Weld leads to platform
- Air line to platform
- Hydraulic oil cooler
- Fire resistant hydraulic oil
- Biodegradable hydraulic oil
- Basic hostile environment kit
- Deluxe hostile environment kit
- Deluxe aircraft protection package (6 ft platform only)
- Tool tray
- Fluorescent tube caddy
- Pipe cradle (pair)
- Alarm package
- Panel cradle package\*
- Platform work lights
- Front driving lights
- Lockable platform control box covers
- Second battery
- Tow package

### POWER

- Engine gauge package
- AC generator packages (110V/60Hz, 3000W or 220V/50Hz, 2500W)
- Cold Weather Packages
- Arctic Packages
- Diesel scrubber/spark arrestor muffler
- Diesel spark arrestor muffler
- Retained key selector switch
- LPG tank only, steel, 33.5 lb (15.19 kg) capacity
- Additional LPG tank with carrier

\* Available on select models

\*\* Not available on CE machines

\*\*\* 750 lb capacity option adds 5,100 lbs (2,313 kg) to weight

### Working At Height Limited

(Southern Office)  
Amberley Court  
Old Elstead Road  
Milford  
Surrey  
GU8 5EB

Tel: 01483 415 410  
Fax: 01483 417 719

### Working At Height Limited

(Northern Office)  
The Portergate  
Ecclesall Road  
Sheffield  
South Yorkshire  
S11 8NX

Tel: 0114 209 6206  
Fax: 0114 209 6001

### Suppliers of:

Powered Access Platforms  
Aerial Work Platforms  
Runabout Access Platforms  
Scissor Lifts  
Articulating Boom Access Platforms  
Telescopic Boom Access Platforms  
Material Lifts  
Telehandlers  
MEWPS Training