

# Model 5967S

## 27' - 67', 3-Piece Boom

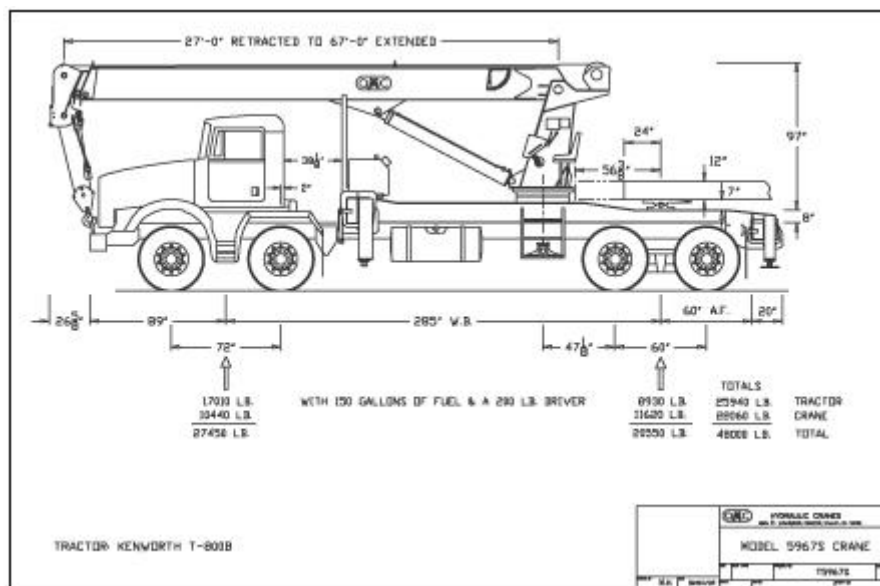
### Standard Specifications



#### Features:

- **Boom:** The 27' to 67', three section boom features fully hydraulic proportional extension and retraction. Welded steel box construction with replaceable wear pads and bushings. Maximum tip height is 76.5'. Elevation is -3 degrees to 80 degrees.
- **Boom Tip:** Three sheaves with roller bearings, cable stays, and pad eyes for wedge sockets provide the ability to reeve from 1 to 6 parts of line without requiring the attachment of snatch blocks. Boom tip has quick reeve design that does not require removal of wedge socket to change parts of line. The use of non-metallic sheaves reduces boom weight and increases cable life.
- **Rotation:** A 39" diameter swing bearing is driven by a planetary gear box with an integral brake. The standard hydraulic and electric swivels provide 360 degrees of continuous rotation. All components are accessible from the top of the deck for easy maintenance.
- **Body:** No body is supplied as standard. Body design is done on a custom basis by the dealer. The rig up allows you to tailor the crane to your specific requirements.

- **Paint:** All components are pre-painted in customer's choice of colors with epoxy primer and polyurethane topcoat prior to assembly to ensure maximum protection.
- **Subframe:** Featuring a full length tapered torsion box constructed with alloy steel and fully seal welded which connects the front outrigger housing with the rear stabilizer. It is designed to withstand all loads produced during crane operation. The frame saver mounting requires no welding on the chassis rails.
- **Outriggers:** 18' spread, out and down type front and rear telescoping outriggers are individually controlled. Four 24" inch diameter aluminum pads for the front and rear are standard. Upper controlled outriggers are optional.
- **Controls:** Ride around operator platform with control valves and adjustable seat and foot throttles. Outriggers are operated from the ground on the left and right sides.
- **Hydraulic System:** Hydraulic system includes transmission mounted PTO, tandem gear pump, and hydraulic reservoir.
- **Winch and Reeving:** Standard winch has variable speeds, power up and power down, planetary drive with spring applied, hydraulically-released brake. Maximum base layer line pull: 12,000 lbs.  
Maximum top layer : 115 ft./min  
Reeving: Four parts of line  
Rope: 445' - 9/16" diameter, Flex-X-19  
Load Block: 15-ton, double sheave, roller bearings with swivel hook and safety latch  
A 50,000 LB. winch package is available as an option
- [Options](#)



### Axle Weights (LB.) Distribution

	Truck	Crane	Complete Unit
<b>Front Axle</b>	17,040	10,910	25,940
<b>Rear Axle</b>	8,900	11,800	20,700
<b>Total</b>	25,940	22,710	48,650

### Load Chart for 5967S

Radius in Feet	Over Rear			Over Side			Over Front		
	27' Boom	47' Boom	67' Boom	27' Boom	47' Boom	67' Boom	24' Boom	47' Boom	67' Boom
6	58,790*			59,000*			58,790*		
8	48,780*			48,780*			48,780*		
10	42,500*	35,590*		42,500*	35,590*		42,500*	35,590*	
12	38,040*	31,120*		38,040*	31,120*		38,040*	31,120*	
15	29,520	26,710		29,520	26,710		<u>29,520</u>	<u>26,710</u>	
18	23,960	23,550	18,070	23,960	23,550	18,070	18,360	18,880	<u>18,080</u>
20	21,210	21,400	16,350	21,210	21,400	16,350	13,990	14,450	14,600
25	16,140	16,390	13,000	<u>16,140</u>	<u>16,390</u>	13,000	8,120	8,580	8,860
26.2	14,700	-	-	14,400	-	-	6,800	-	-
30		12,970	10,720		11,150	<u>10,720</u>		5,650	5,720
35		10,550	9,030		7,800	7,910		3,880	3,950
40		8,730	7,730		5,710	5,820		2,700	2,770
45		7,300	6,610		4,260	4,390		1,820	1,930
46.2		6,700	-		3,800	-		1,450	-
50			5,770			3,350			1,290
55			5,060			2,560			790
60			4,480			1,940			390
65			3,880			1,420			50
66.2			3,550			1,160			0

\*Maximum load with standard reeving is 29,600 LB.

Numbers shown in bold type (above tipping line) indicate structural capacity limits.

All other numbers indicate tipping limits. Actual numbers may vary due to differences in finished weight, wheelbase, etc.

<b>Wire Rope Capacity (LBS).</b>								
<b>Parts Line</b>	<b>1</b>	<b>2</b>	<b>3</b>	<b>4</b>	<b>5</b>	<b>6</b>	<b>7</b>	<b>8</b>
<b>Line Pull</b>	7,400	14,800	22,200	29,600	37,000*	44,400*	51,800*	59,200*

Do not exceed parts of line rating.

### Structural Load Chart

<b>Radius in Feet</b>	<b>Boom Angle</b>	<b>27 Foot Boom</b>	<b>Boom Angle</b>	<b>50 Foot Boom</b>	<b>Boom Angle</b>	<b>70 Foot Boom</b>
<b>6</b>		<b>59,000*</b>				
<b>8</b>	75	<b>48,780*</b>				
<b>10</b>	70	<b>42,500*</b>	80	<b>35,590*</b>		
<b>12</b>	65	<b>38,040*</b>	77	<b>31,120*</b>		
<b>15</b>	58	<b>29,520</b>	73	<b>26,710</b>		
<b>18</b>	49	<b>23,960</b>	70	<b>23,550</b>	78	<b>18,070</b>
<b>20</b>	43	<b>21,210</b>	67	<b>21,400</b>	76	<b>16,350</b>
<b>25</b>	21	<b>16,140</b>	60	<b>16,390</b>	71	<b>13,000</b>
<b>26.2</b>	0	<b>14,700</b>	-	-	-	-
<b>30</b>			52	<b>12,970</b>	66	<b>10,720</b>
<b>35</b>			43	<b>10,550</b>	61	<b>9,030</b>
<b>40</b>			33	<b>8,730</b>	56	<b>7,730</b>
<b>45</b>			16	<b>7,300</b>	50	<b>6,610</b>
<b>46.2</b>			0	<b>6,700</b>	-	-
<b>50</b>					44	<b>5,770</b>
<b>55</b>					37	<b>5,060</b>
<b>60</b>					28	<b>4,480</b>
<b>65</b>					14	<b>3,880</b>
<b>66.2</b>					0	<b>3,550</b>

