



TAYLOR MACHINE WORKS, INC.

TXH SERIES

48-IN. LOAD CENTER MACHINES

you
can
depend
on

Big Red



TXH-370M*

TXH Series Models and Capacities

TXH-300L (30,000-lb. Cap. at 48" L.C., 148" WB)	TXH-350KS (35,000-lb. Cap. at 48" L.C., 148" WB)
TXH-300KS (30,000-lb. Cap. at 48" L.C., 148" WB)	TXH-370M (37,000-lb. Cap. at 48" L.C., 145" WB)
TXH-350L (35,000-lb. Cap. at 48" L.C., 148" WB)	TXH-400L (40,000-lb. Cap. at 48" L.C., 155" WB)

ENGINEERING DONE RIGHT THROUGH

FAITH VISION WORK

*Featured truck is shown with available options.



TXH SERIES

Taylor Machine Works was built on the premise, "We engineer and build what you need." This is just as true today as it was in 1927. We can design, engineer, and manufacture equipment tailored specifically to meet the material handling needs of your business.

Taylor Machine Works is acknowledged to be one of the top lift truck manufacturers in the world today, and reaffirming that reputation is the TXH Series of lift trucks.

Optional mast choices available
Choose from different configurations to best fit your material handling needs

TXH-300L through TXH-400L mast tilting
15° forward and 12° backward

Overhead tilt cylinders
Less mast rail twisting than low mount tilt cylinder designs
Greater mast stability

Fender mounted forward facing work lights
option shown

Heavy-duty carriage
Minimal maintenance and more resistant to dynamic/shock loads with rough terrain, high lift, and/or offset loads.
Optional sideshift shown

Pin mounted full width adjustable forks
Shown with optional fork positioning

Mast mounted forward facing work lights
Standard



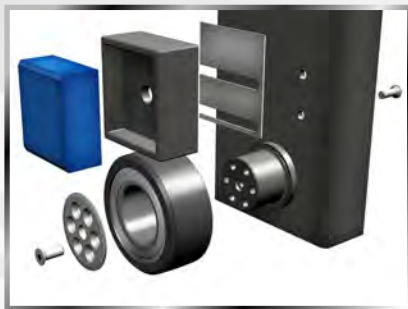
The TXH Series of lift trucks can boast 6 models to choose from, with lift capacities ranging from 30,000-lbs to 40,000-lbs at a 48" load center.

The TXH Series features the most dependable and diverse assortment of mast and carriages in its class. Known for their innovative design, these masts give you the confidence in knowing it will work every time you need it. Even when maintenance is required you can feel safe knowing our engineers have designed our mast and carriages to be as easy to maintain and repair as possible.

The telescopic, ULTRA-VU mast features a nested channel construction. The double-acting lift cylinders are positioned to the rear of the mast rails while the multi-leaf lift chains are nested inside the mast rails. Two lifting eyes and bolt-on caps permit safe, easy removal of the mast in the event that repair is needed.

The pin-mounted forks are hammer forged from heat treated steel with increased thickness in critical heel sections. The forks are fully adjustable from full width of carriage to +/-2-in. Lengths and widths vary depending on your particular needs and model type.

The mast and carriage main rollers are common and use Timken® tapered roller bearings. Chain rollers use sealed ball bearings. Common, cast nylon, side thrust pads are adjustable to compensate for wear.



Carriage Groups

100-in standard
(TXH-300L through TXH-400L)

Simple design-

- bolt-on housing
- Timken tapered roller bearings
- cast nylon side thrust pads
- shims, if necessary

Minimal maintenance with more resistant to dynamic/shock loads with rough terrain, high lift, and/or offset loads



Wide stance for more stable and confident handling

LIFT WITH CONFIDENCE

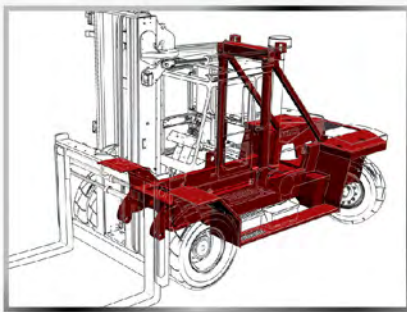
TXH SERIES

The TXH Series 48-in. L.C. line of industrial pneumatic lift trucks was designed and engineered with the operator and service personnel in mind.

Each model in the TXH Series of lift trucks uses a Tier Certified Cummins® electronic turbocharged, charge air aftercooled (air to air) diesel engine. Standard engine features include electronic diagnostic and maintenance monitor, fuel/water separator and engine/transmission protection systems, improved fuel economy, and reduced emissions.

The TXH Series comes standard with top of the line features such as:

- TIER certified high output engines
- High capacity cooling systems
- Heavy-duty transmissions
- Heavy-duty planetary drive axles
- Heavy-duty, proven design steer axles
- TICS (Taylor Integrated Control System)
- All-welded steel chassis



Easily removable side panels

for better access to internals
Easy, under cab, access to the junction box and to reset circuit breakers

Sealed electrical connectors
All wiring is color and number coded

TaylorMax air cleaner
option shown

Climate control system
option shown

Internal, force-cooled hydraulic actuated service brakes

Wet disc brake oil and hydraulic oil are cooled by hydraulic cooler

Heavy-duty bolted planetary drive axle

6 planetary pin (TXH-400L has 3 planetary pins), force-cooled wet disc brakes
Brake saver system does not allow operator to drive through parking brakes





Hydraulic tank –

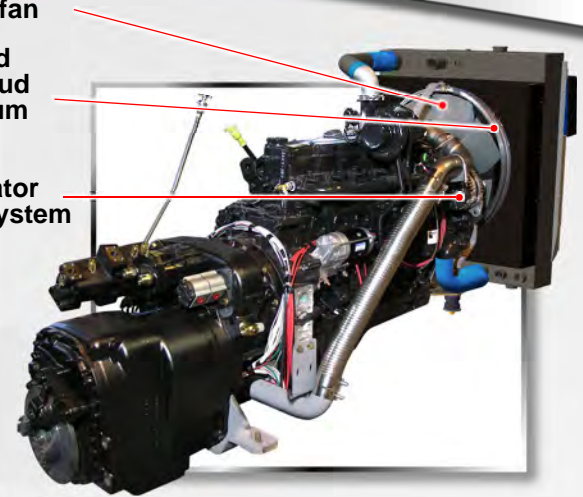
- easily removable
- heavy gauge steel wall
- serviceable filter element
- remote mounted breather
- internal suction screen
- 78-gallon capacity

Full flow, in-tank, 10-Micron return filtration

7-blade pusher fan

Engine mounted sealed fan shroud insures maximum air flow

130 amp alternator 12V electrical system



ENGINE

- Tier Certified Cummins electronic, low emissions (see specification sheet for engine detail)
- Lower fan speed and engine speed for less noise
- Electronic diagnostics on engine with fault code history for easy diagnostics and repair
- Built-in emergency shut-down system for engine and transmission
- All service and daily checks can be made easily from the running boards
- High capacity charge air, engine coolant, transmission coolant and hydraulic oil cooling system
- Easily serviceable 3-section cooling system

TRANSMISSION

- Heavy-duty 3-speed Powershift transmission
- High capacity 12-plate clutch system for added durability
- Operator controlled hydraulic inching for precise vehicle position control
- Automatic Powershift Control (APC)
- Full directional modulation for soft directional changes
- Transmission oil cooler is part of the 3-section cooling system
- Cooler has wide fin spacing to resist plugging
- Remote mounted filter to reduce oil spills
- Flex-plate drive
- Full width transmission mount goes from rail to rail in chassis for a more stable drivetrain



Transmission output shaft disc mounted, parking brake Spring on – Hydraulic off Instrument panel mounted control

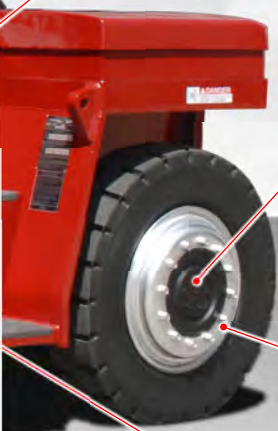


Sliding engine hood
Easily removable for greater access (All service and daily checks can be made easily from running boards)



Heavy-duty steer axle is a single hydraulic cylinder design with heavy-duty links from the cylinder ram directly to tapered roller bearing mounted spindles.

Dual element air cleaner with restriction indicator



Positive rim mountings

Hinged, greaseable battery box door

Both the fuel and hydraulic tank are easily removable

TXH SERIES



Two brake pedals
left – brakes and inching
right – brakes only



Comfortable adjustable arm rest
with fingertip joystick control for
smooth precise handling



Spacious uncluttered cab
with tilt steering, hinge-down dash,
climate controls and adjustable
seating
Premium vinyl or cloth seat that
rotates 15° left and 20° right



Easy to understand diagnostic display. TICS (Taylor Integrated Control System) using CANbus technology is standard on the TXH Series.

The TXH Series features a spacious, all steel cab with increased leg and head room, sound deadening rubber mat flooring, tilt steering wheel, simple T-shaped dash with hinge down instrument panel, fingertip electric joystick controls, and optional climate control system for operator comfort and convenience.

The tilt steering column and the adjustable full-suspension air-ride seat places your operator in the utmost comfort. The right-side armrest's adjustment capabilities allows even the most demanding operator to place the truck's controls within easy reach. The fingertip controls, on the the low effort joystick, allow the operator to control the mast and carriage with ease and comfort.

This blend of ergonomics and technology will help your operator be more efficient with the job at hand... handling materials.



Dual panoramic interior rear view mirrors standard
Dual external side view mirrors standard
Optional pedestrian camera and monitor

145-IN W.B.



148-IN W.B.



155-IN W.B.



COMFORT & SAFETY



Unobstructed rear view
The air snorkel and shielded exhaust are mounted on the corners of the cab to keep the view open.



Overhead rear work lights
for improved safety and visibility
Key-switch actuated amber strobe light



Forward activated alarm



Reverse activated alarm
Sloped counterweights
for improved rear visibility

External side view mirrors
standard



Extra large, shock absorbing, center mounted cab for operator comfort and noise reduction
Tinted glass throughout the cab

Self cleaning, anti-slip, steps
3-point mounting and dismounting



The Best Support In The World!



No-one can match our record for service and reliability.

Worldwide customer service, backed by over 83 years of Taylor® customer satisfaction and trust.



Sudden Service, Inc.
649 N. Church Ave.
Louisville, MS 39339-2022
Phone (662) 773-8056
Fax (662) 773-9157
suddenserviceinc.com

you can
depend
on

“*Big Red*”

is a personal and collective commitment from the Taylor "Big Red" Team® to every customer. Customer needs and expectations are the main priorities for Taylor® engineering, manufacturing, marketing, and service organizations. Sudden Service, Inc.® and our worldwide Taylor® dealer network are ready to respond to your requests for support twenty-four hours a day, seven days a week!

Genuine Parts • Unbeatable Service • Trusted Support



Taylor Machine Works, Inc.
650 North Church Avenue
Louisville, Mississippi 39339-2017
Phone (662) 773-3421 Fax (662) 773-9146
taylorbigred.com

TMW-BR-107-01 9/15/10